

TRUCK, UTILITY, 1/4 TON GS LANDROVER, SERIES 2 AND 2A

(FITTED FOR RIFLE 106 MM)

.5 INCH AMMUNITION STOWAGE HOLDER

MODIFICATION INSTRUCTION

REFERENCE:- AC in WM No 23046/2.

SUMMARY

1. This instruction details the reinforcement of the mouth of the .5 inch ammunition stowage holder to prevent distortion of the mouth of the holder by knocks from the gun mounting front wheel.

Estimated manhours to perform: 1.5

2. Priority: Group 2

3. Vehicles affected:

Subject vehicles.

4. Items affected:

.5 inch ammunition stowage holder

5. Action required: By RAEME workshops authorised to carry out field work in accordance with WKSP A 850.

6. Stores required: (Obtainable through normal channels).

Stock No	Designation	Qty per Veh
9515-66-011-5894	STEEL SHEET, carbon, hot rolled, mild, 10 BG (.125 in) by 1 in by 30 in	1
NIV	RIVET, POP, Tucker Type TLP/D/639BS	8

DETAIL

7.
 - a. Manufacture the reinforcing frame as detailed in fig 1, welding to be done in accordance with WKSP B 010.
 - b. Drill the rivet holes as shown using a No 11 drill (.191 inch).
 - c. Remove all sharp edges and de-burr holes.
 - d. Using the frame as a template, position on ammunition holder and mark the rivet holes.
 - e. Paint the reinforcement frame.
 - f. Clamp the frame in position on the holder and pop rivet.
 - g. Paint the work in accordance with WKSP B 700.

8. On completion of this modification a modification record plate (9905-66-016-3535) is to be fitted by riveting to the LH end side panel of the instrument panel frame. The numeral "1" is to be defaced in accordance with WKSP A 851.

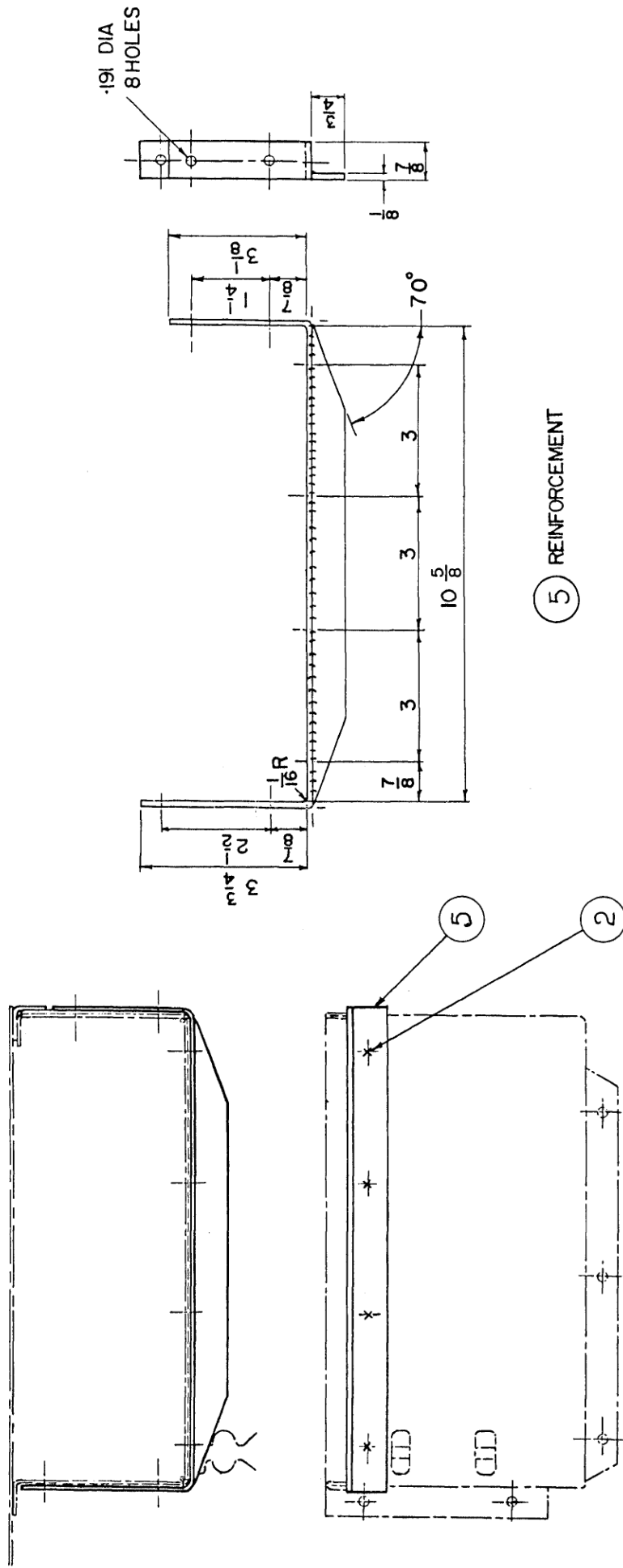


FIG 1 - .5 INCH AMMUNITION HOLDER REINFORCEMENT

E N D